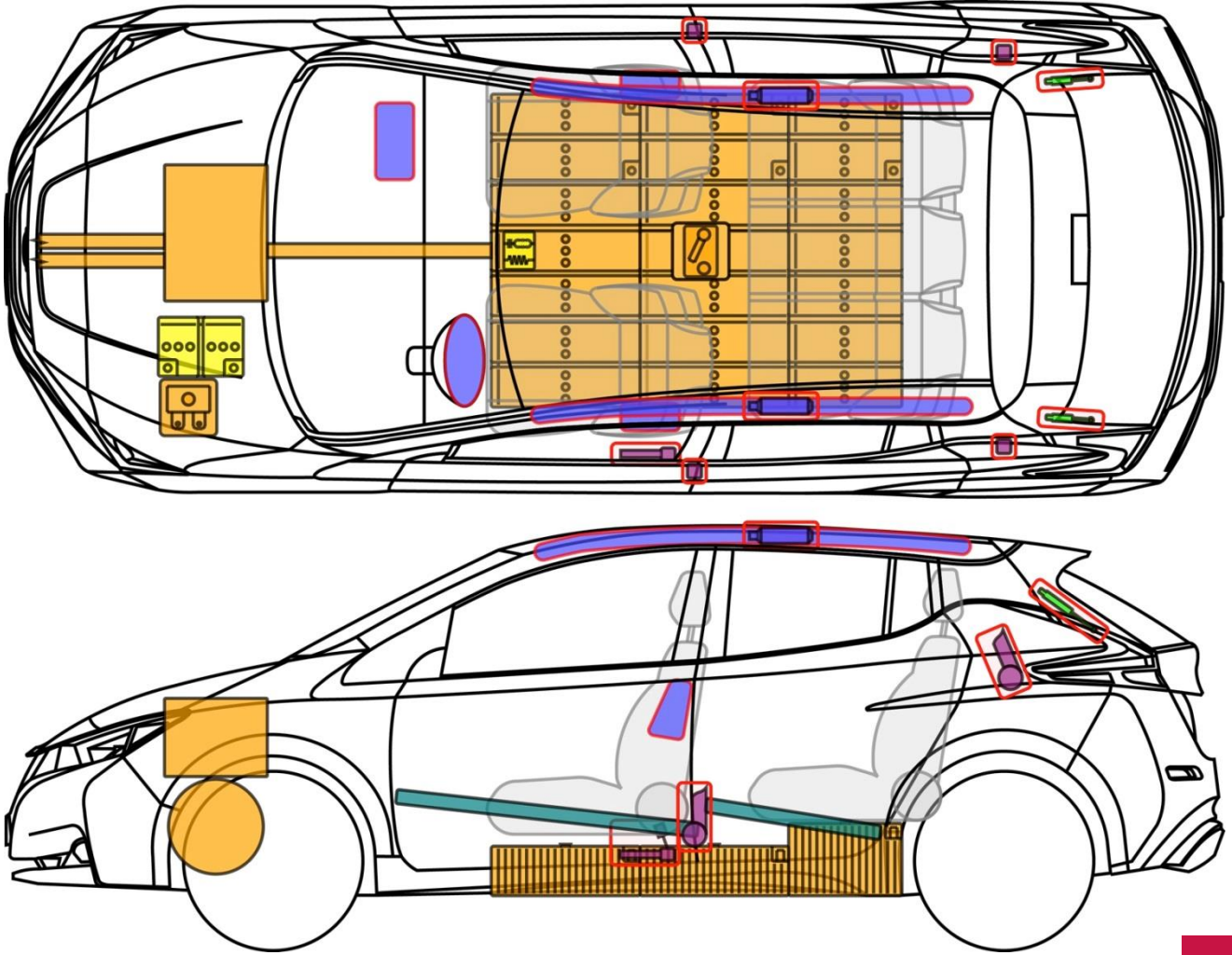




LEAF

Type: ZE1, 2017-

SJNFAAZE1U0xxxxxx



LEAF

Legend

	Airbag		Stored gas inflator		Seat belt pretensioner		SRS control unit		Pedestrian protection active system
	Automatic rollover protection system		Gas strut / Preloaded spring		High strength zone		Zone requiring special attention		
	Battery low voltage		Ultra-capacitor, low voltage		Fuel tank		Gas tank		Safety valve
	Battery pack, high voltage		High voltage power cable / component		High voltage device that disconnects High voltage		Fuse box disabling high voltage		High voltage ultra-capacitor,
	Fuel tank content Gasoline / Ethanol								



LEAF

Type: ZE1, 2017-
SJNFAAZE1U0xxxxxx



General information


- In case of a collision with airbag deployment and/or seat belt pretensioner activation, the propulsion system will be disabled. The restraint systems are still active.
- The time to complete deactivation of the restraint systems is 10 minutes after performing the deactivation steps.
- **Protective equipment required (insulating gloves up to 1000 V, face protection).**

Secure the vehicle against rolling away

- Block wheels
- Set parking brake

Deactivating the high voltage (HV) and restraint system (SRS)

Method 1

1. Check if the „Ready“ indicator in the instrument cluster is illuminated. Symbol: 
2. If the system is active, press the Start/Stop button once.
3. Disconnect the 12 Volt battery. Negative battery cable first.





Deactivating the high voltage (HV) and restraint system (SRS)

Method 2

1. Locate and open the fusebox.
2. Remove the indicated fuse from the fusebox.
3. Disconnect the 12 Volt battery. Negative battery cable first.



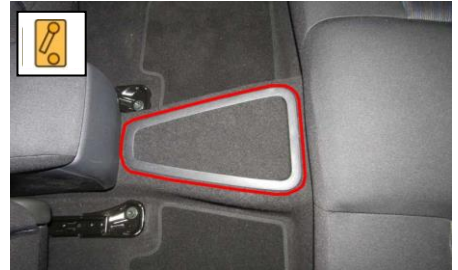
Attention: The restraint systems are completely deactivated after approx. 10 min!



Deactivating the high voltage (HV) and restraint system (SRS)

Method 3

1. Locate emergency disconnect switch.



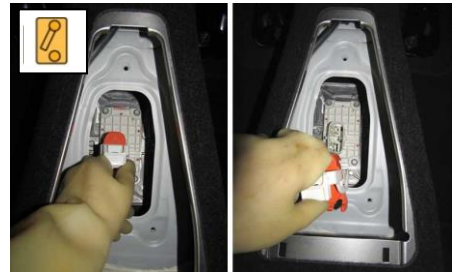
2. Lift the cover at the back (is clamped) and remove it. Unscrew fixing screws of the cover underneath (wrench size 10 mm) and remove cover.



3. Remove emergency disconnect switch as indicated!



4. Disconnect the 12 Volt battery. Negative battery cable first.



- **If the 12 volt battery can not be disconnected, the vehicle restraint systems are still active!**
- **Attention: The restraint systems are completely deactivated after approx. 10 min!**